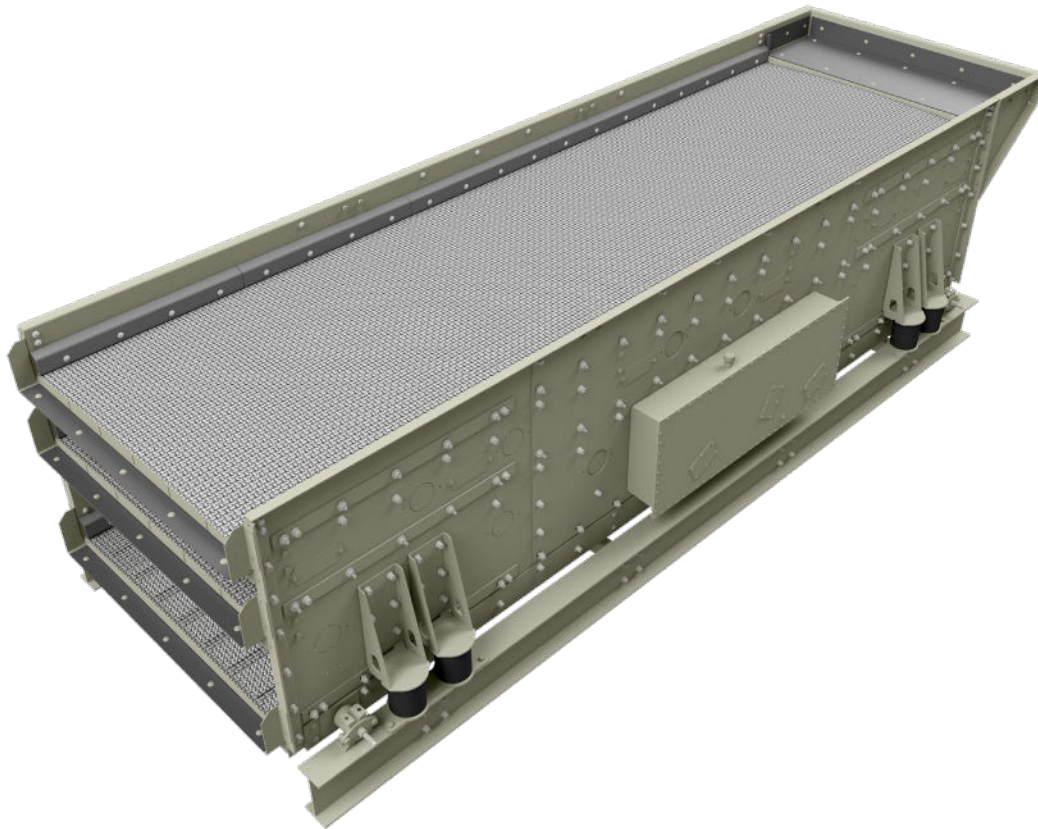


# LP Screen

## Horizontal Vari-Frequency Screen



### Standard Screen Features

- VARI-FREQUENCY bottom deck for improved performance and throughput
- Low overall screen height for portability
- Three shaft adjustable oval stroke motion
- Quickly adjusts to a finer or coarser screening application by adjusting stroke angle, stroke length and speed
- Six self-aligning spherical roller bearings
- Fully contained oil splash lubrication system
- "Titan" non-contact drive seal (no breather required)
- Single crown decks
- Bolt in deck bracing reduces deck and basket stress
- Draw plates for side tension wire cloth
- 4 ft panels standard for most models
- Bolt-on, AR lined 24 in (510 mm) feedbox
- Bolt-on 4 in AR-lined discharge lips
- Huck bolted construction (no-weld side plates)
- Rubber springs to reduce basket, gear, and bearing stress. Also reduces noise. (Coil springs optional)
- Adjustable snubbers for screen stability
- Spray bar knockouts in side plates
- Right hand drive (viewed with material flow)
- Includes belt guard, motor mount, drive belt, and drive sheaves
- Dual belt drive on 38 shaft assemblies
- Lifting bars
- Self-aligning spherical draw bolt washers
- Side plate stiffeners/wear strips at draw bolts
- Screen wire cloth access covers standard on three deck models

## Options

- 2-½° decline
- 5 in (125 mm) additional clearance between top and center decks
- Heavy duty flat decks for modular urethane media (N/A on bottom deck)
- Divided crown decks
- Screen media
- 5 ft wire cloth panels for 20 ft long screens
- U-bolts for heavy gauge wire cloth (N/A on bottom deck)
- Additional feed box and discharge lip configurations
- Base frame
- Coil springs with guards
- Shipping brackets
- Rubber liners for: feed box, discharge lips, shaft tubes, deck cross members, and deck bracing
- Top deck fall protection
- Spray system
- Bolt on covers for spray bar holes
- Freeboard extensions
- LH drive (viewed with material flow)
- TEFC screen drive motor

Feature	Specification
Stroke Length (amplitude) *	Adjustable up to ¾" (19mm)
Stroke Angle	Adjustable: 30° - 60°
Operating Speed (RPM)	Adjustable: 675 - 875
Maximum Feed Size	10" (255 mm)
Maximum Media Weight	8 lb/ft² (39 kg/m²)
Maximum Top Deck Opening: 20'	4" (100 mm)
Maximum feed drop height	18" (460 mm)
AR feedbox liner thickness	¼" (6 mm)
AR discharge lip liner thickness	¼" (6 mm)

\* Stroke is adjusted by adding or removing plug weights. Stroke measured at the center of the screen with standard wire cloth, 4" discharge lips, and 24" feed box.

## Physical and Operating Characteristics

Model	Width		Length		No. of Decks	Weight		Bearing Size (mm)	Power Required	
	ft	mm	ft	mm		lb	kg		hp	kW
6203-32LP w/ Vari-Frequency Deck	6	1,800	20	6,100	3	22,200	10,100	160	40	30

